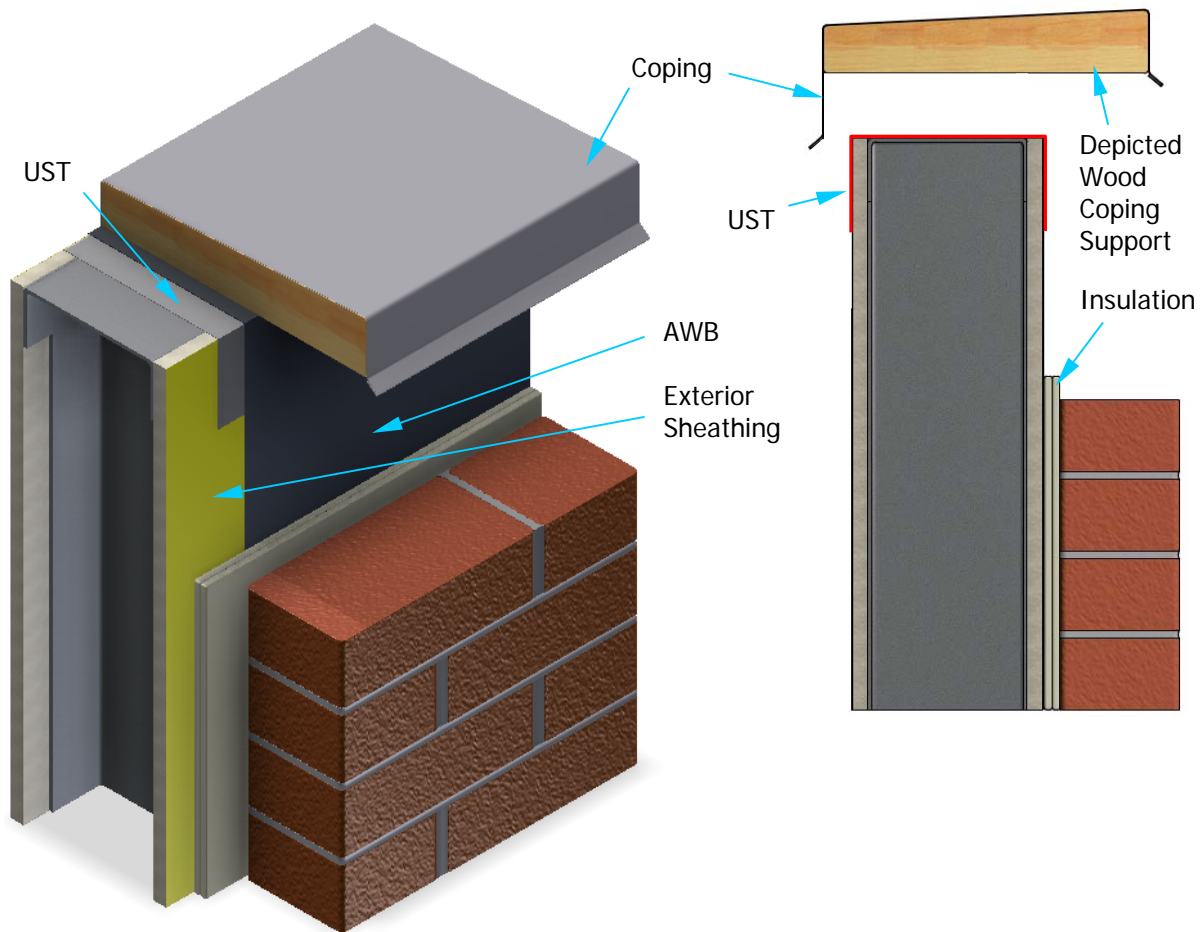


GE Silicone Air Barrier – Parapet-Roof to Wall



Adhere UST over the front and back of parapet using GE SilPruf* as adhesive. UST to extend >2" down both sides of the wall. Sheets of UST may be overlapped and adhered with GE SilPruf* for wider wall thicknesses. Ensure that GE SilPruf* extends to the edges of the UST to prevent possible gaps when the coating is applied.

Apply AWB over entire face of the exterior sheathing overlapping UST, top of parapet, and back sheathing.

LEGEND	AWB	GE SEC2500 SilShield* AWB Liquid Air and Water Barrier
	UST	GE UltraSpan Silicone Transition



Licensed
Products

The above detail is for illustration purposes only. It is intended as a guideline to assist Momentive product users in developing project specific details. Consult appropriate specification documents, data sheets, building codes and any other information deemed necessary for specific requirements. Momentive product users are responsible for determining the suitability of Momentive products for the particular application and all related project details. MOMENTIVE MAKES NO WARRANTY, EXPRESS OR IMPLIED, WITH RESPECT TO THE PERFORMANCE, SUITABILITY OR FITNESS FOR INTENDED USE OF ITS PRODUCTS IN ANY USER'S APPLICATION. Any sale of products or delivery of customer support and advice by Momentive Performance Materials Inc. and/or any of its affiliates ("Momentive") is made exclusively under Momentive's standard conditions of sale, which are available at <http://buy.silicones.com/custcenter/footer/terms.jsp>.